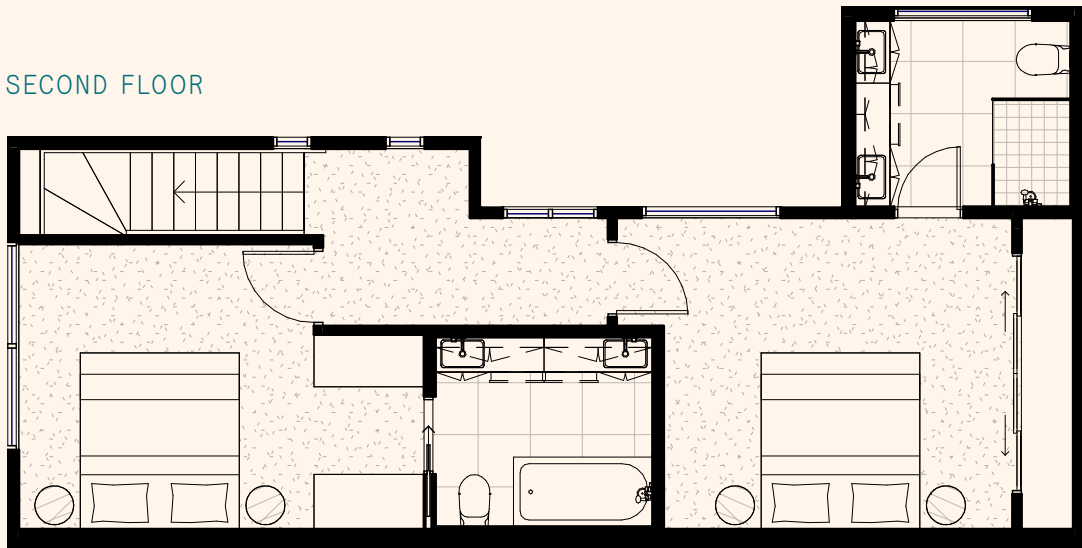


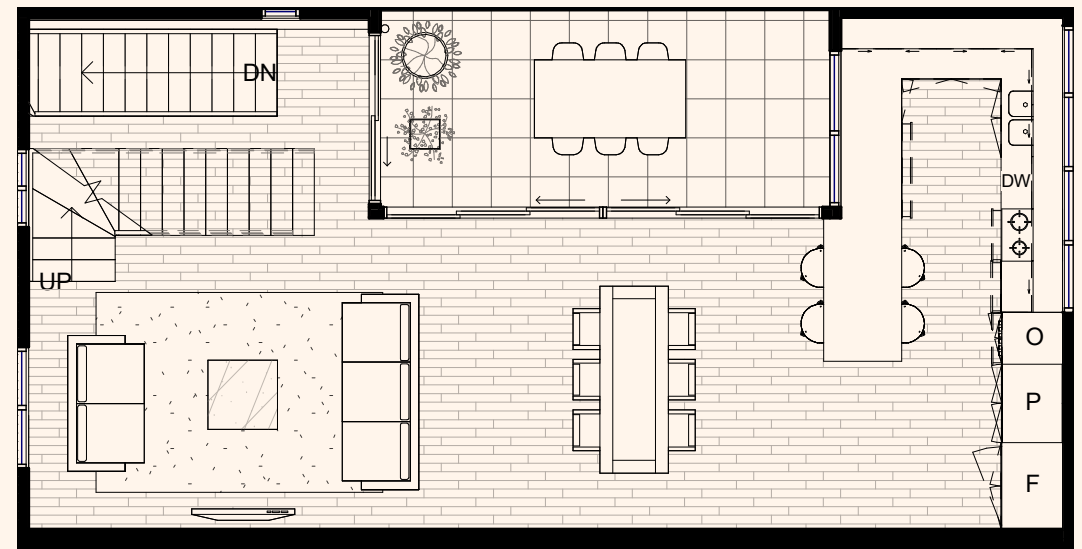
One

INTERNAL	152 M <sup>2</sup>
GARAGE	37 M <sup>2</sup>
P.O.S.	24 M <sup>2</sup>
TOTAL	228 M <sup>2</sup>
LAND AREA	95 M <sup>2</sup>
BEDROOMS	3
BATHROOM	3
CAR SPACES	2

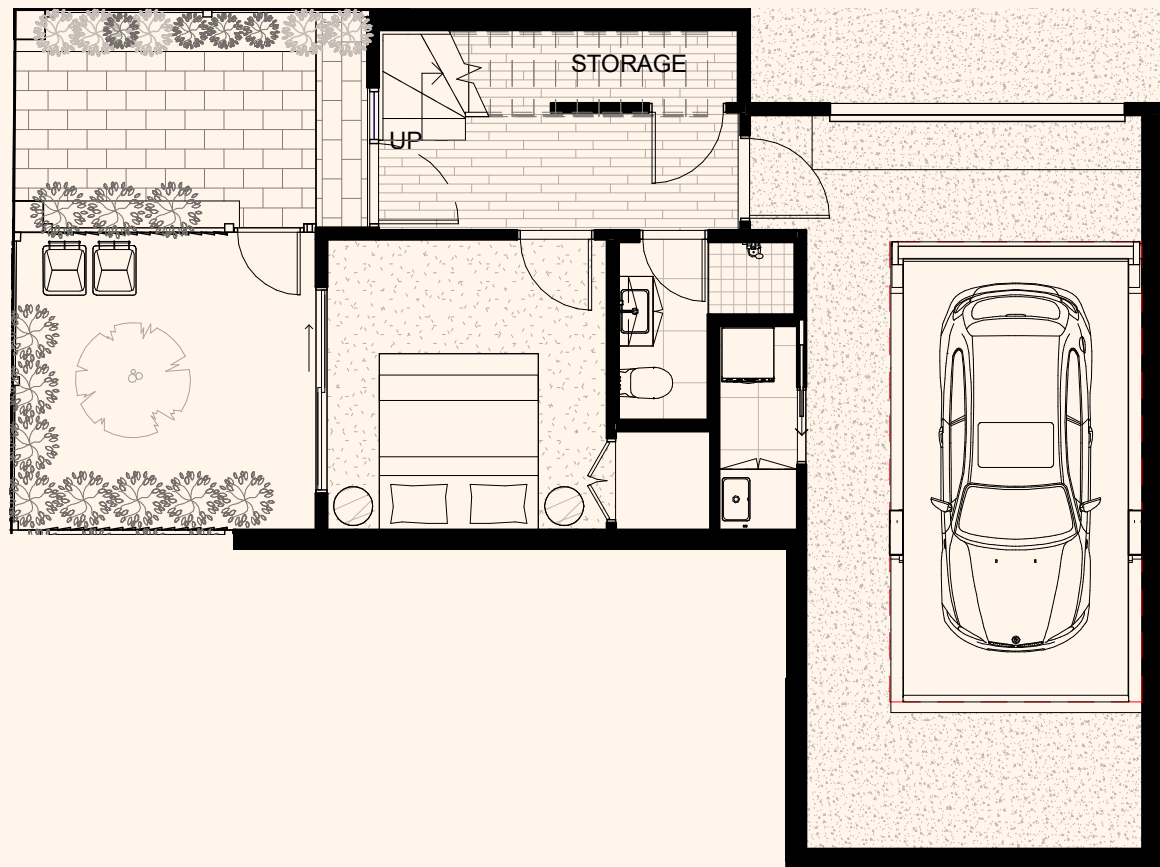
SECOND FLOOR



FIRST FLOOR



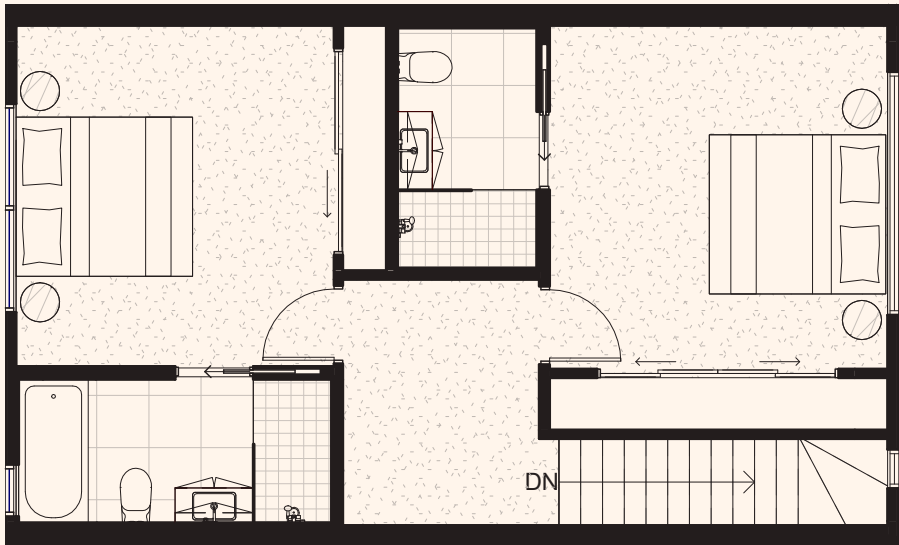
GROUND FLOOR



Two

INTERNAL	170 M <sup>2</sup>
GARAGE	45 M <sup>2</sup>
P.O.S.	36 M <sup>2</sup>
TOTAL	263 M <sup>2</sup>
LAND AREA	113 M <sup>2</sup>
BEDROOMS	3
BATHROOM	3
CAR SPACES	2

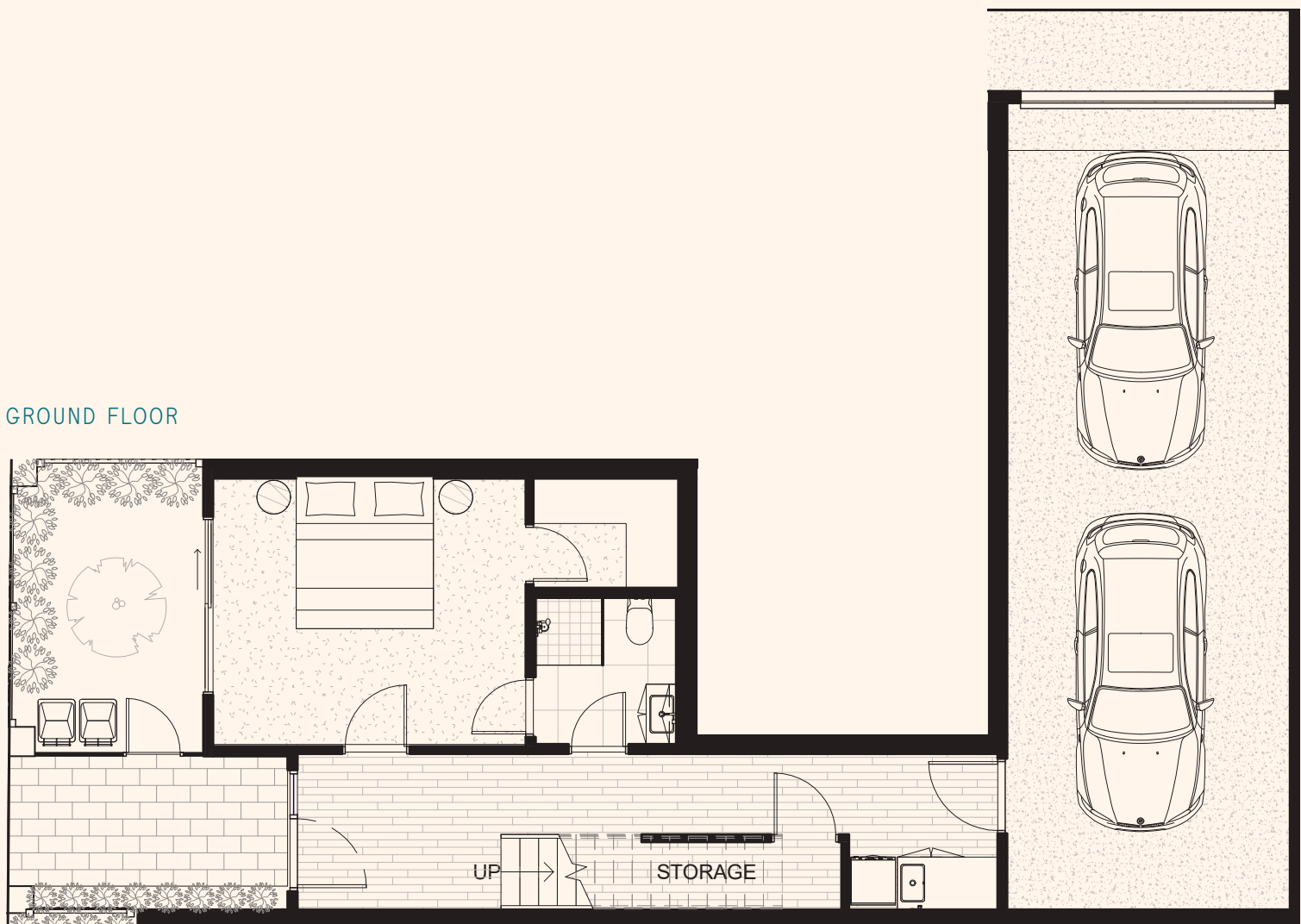
SECOND FLOOR



FIRST FLOOR



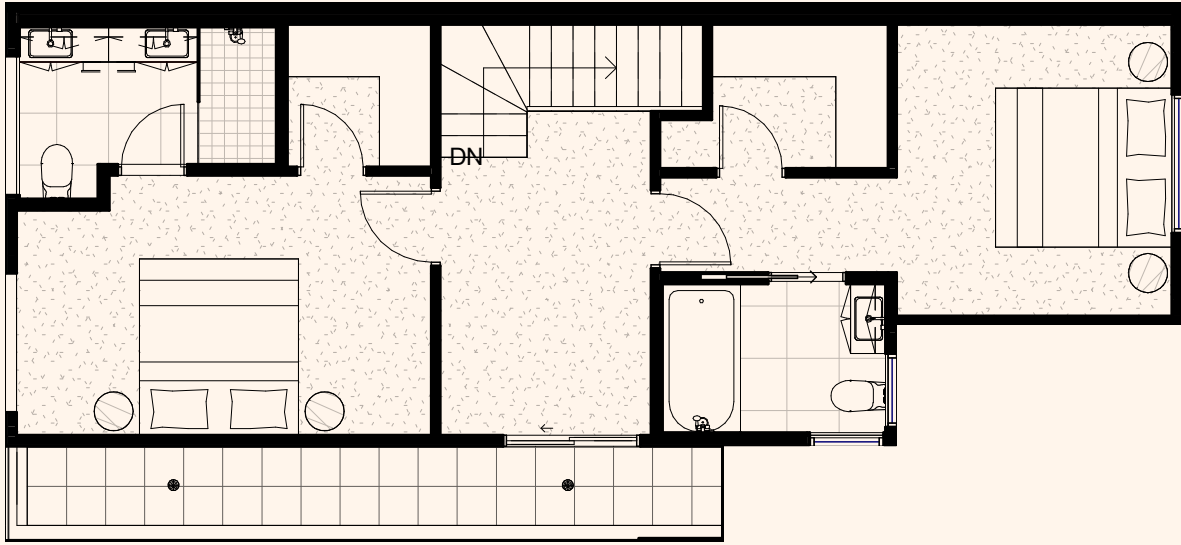
GROUND FLOOR



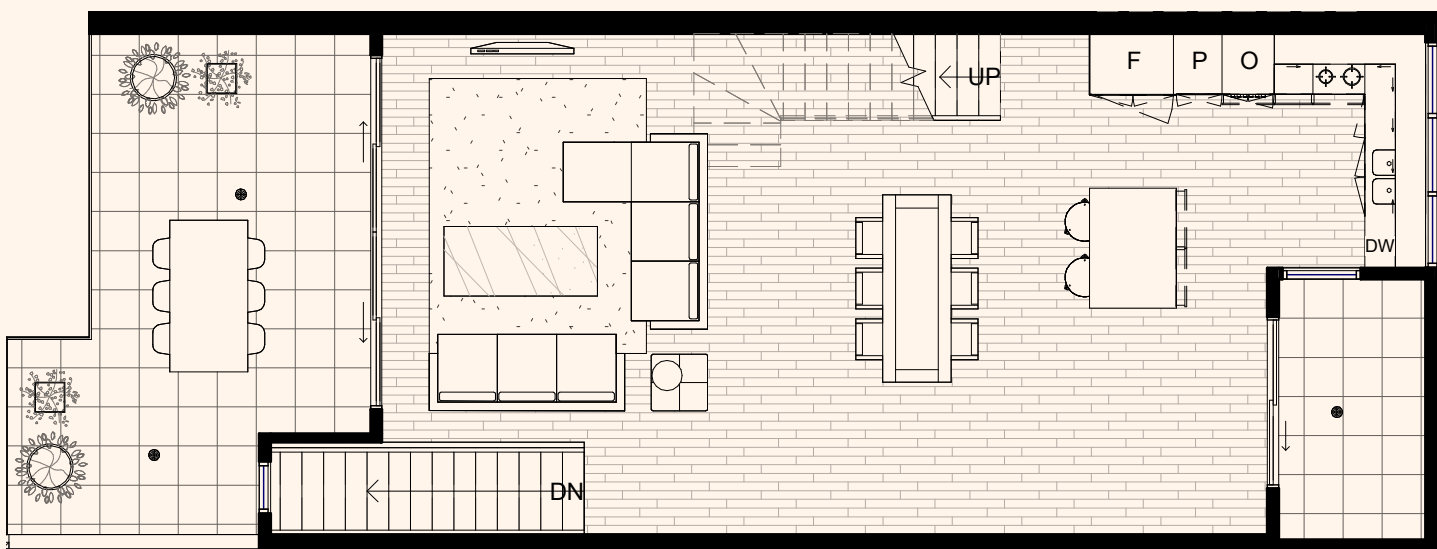
Three

INTERNAL	190 M <sup>2</sup>
GARAGE	40 M <sup>2</sup>
P.O.S.	45 M <sup>2</sup>
TOTAL	284 M <sup>2</sup>
LAND AREA	116 M <sup>2</sup>
BEDROOMS	3
BATHROOM	3
STUDY	1
CAR SPACES	2

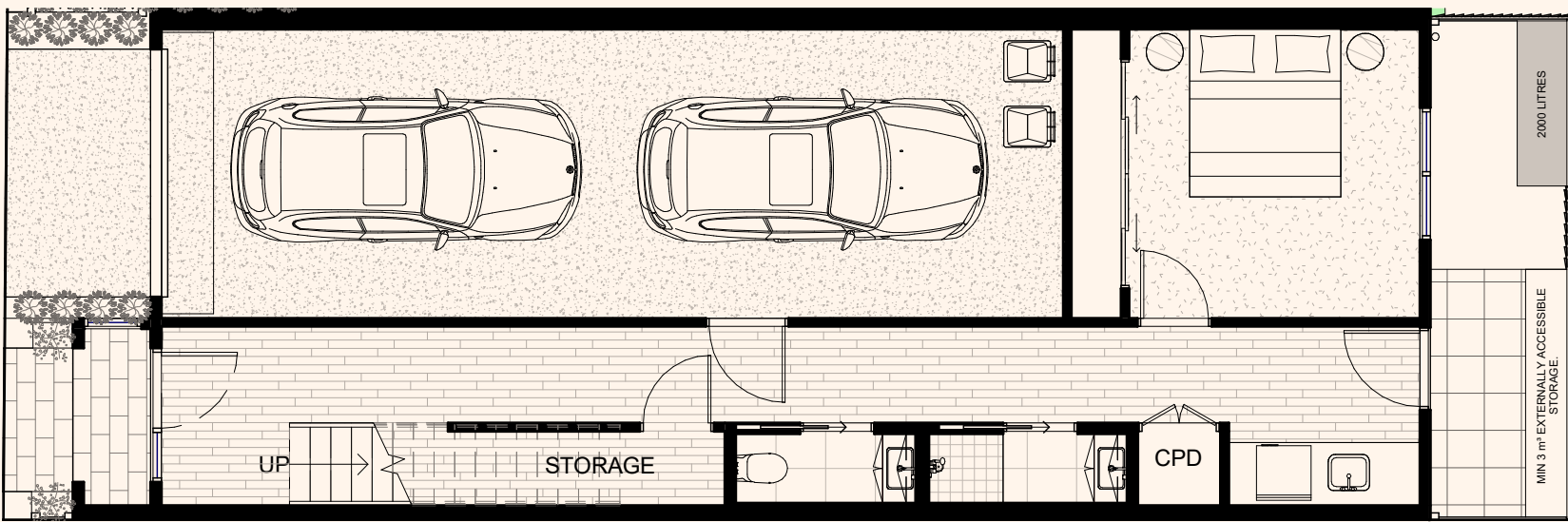
SECOND FLOOR



FIRST FLOOR



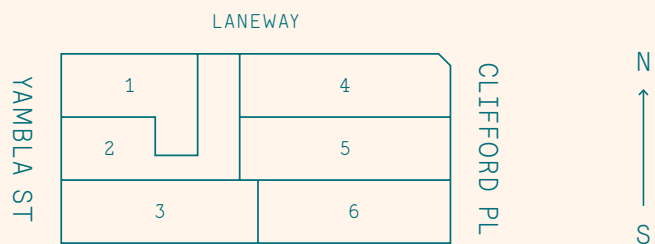
GROUND FLOOR



0 1 2 5M

DISCLAIMER - These preliminary plans show the proposed town house layout as at the date of issue. Any furniture shown are for illustrative purposes only. The plans may change before construction is complete. The seller, its related companies and agents do not make any warranty as to the accuracy of these preliminary plans nor that they will not change. Buyers should note that the seller is permitted to make changes to the preliminary plans please refer to the contract of sale for full details.

Yambla

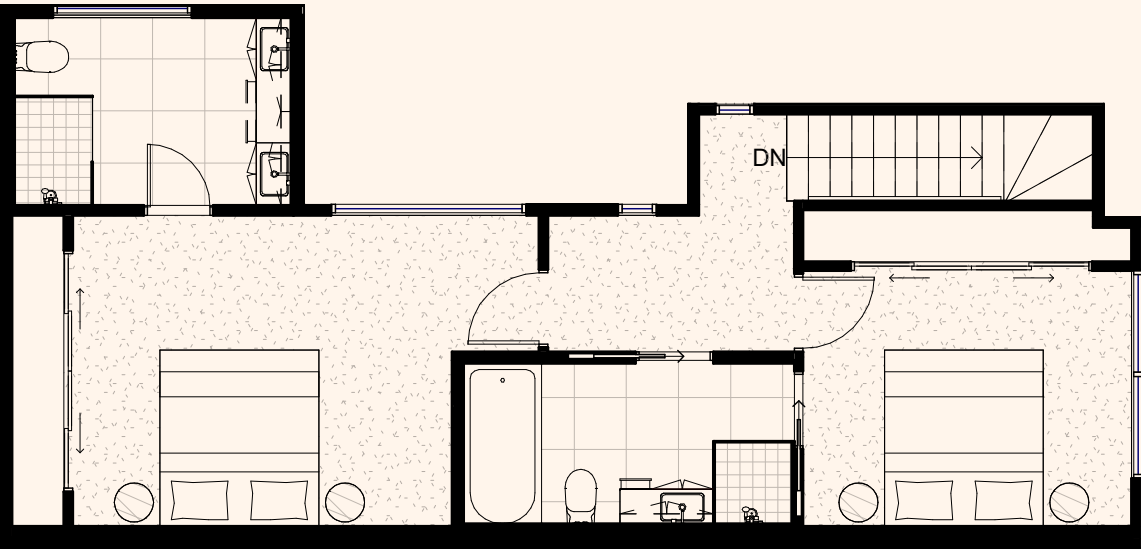




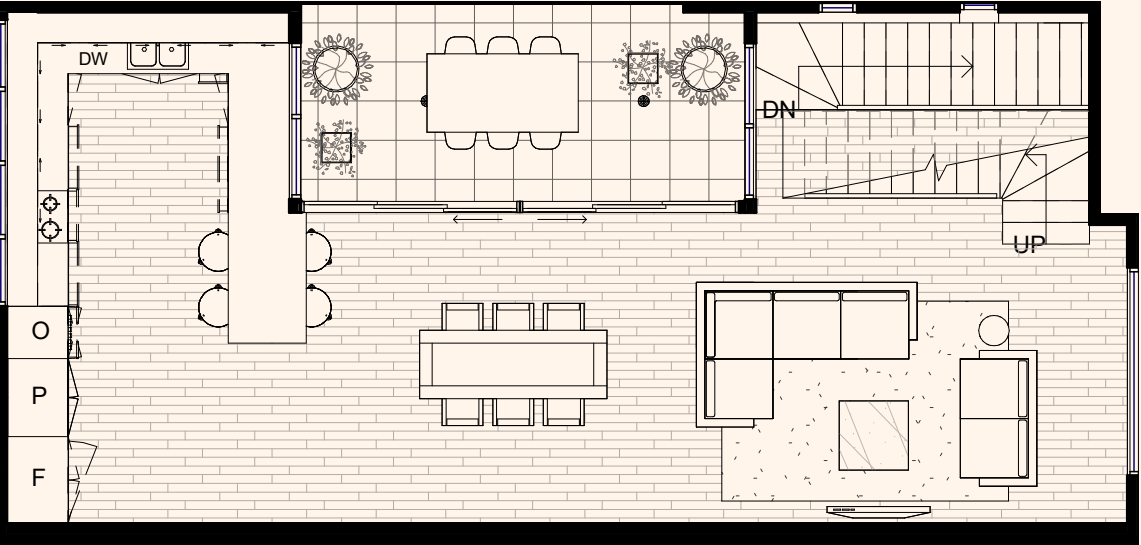
Four

INTERNAL	188 M <sup>2</sup>
GARAGE/CARPARK	40 M <sup>2</sup>
P.O.S.	33 M <sup>2</sup>
TOTAL	268 M <sup>2</sup>
LAND AREA	124 M <sup>2</sup>
BEDROOMS	3
BATHROOM	3
CAR SPACES	2

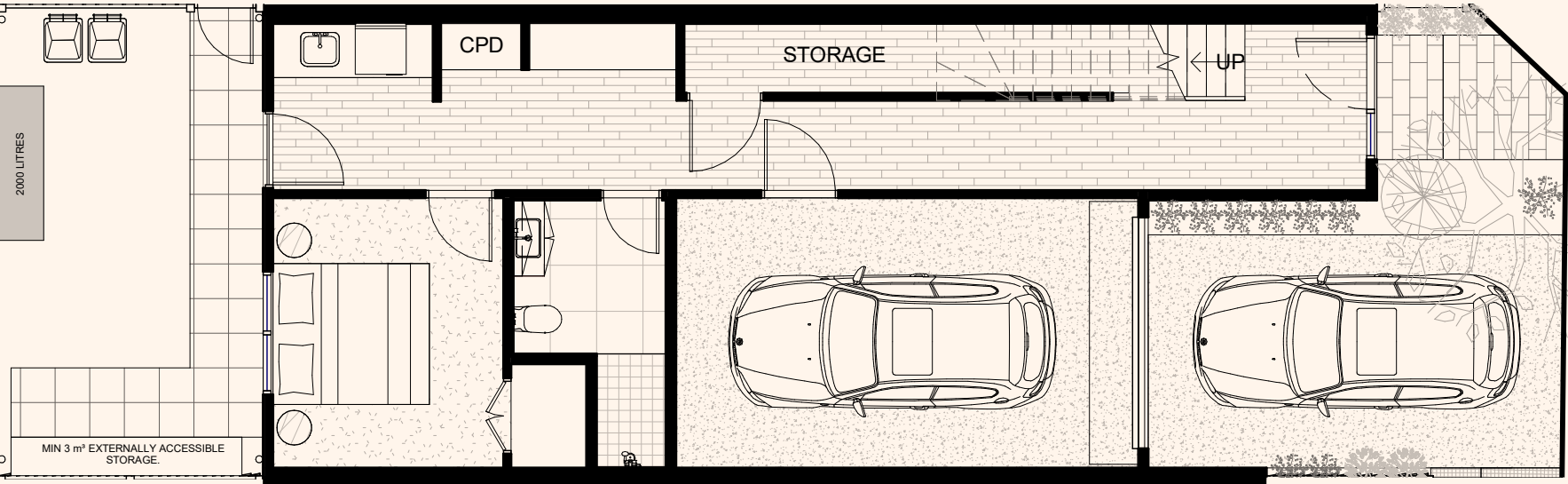
SECOND FLOOR



FIRST FLOOR



GROUND FLOOR

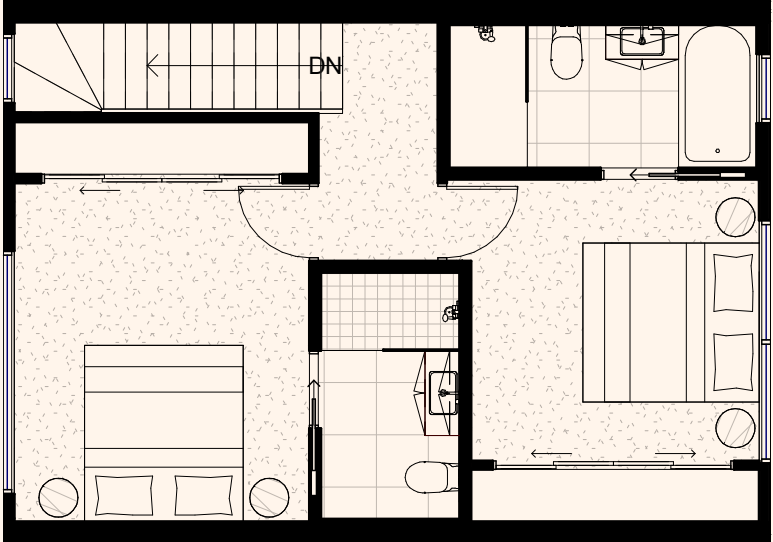


DISCLAIMER – These preliminary plans show the proposed town house layout as at the date of issue. Any furniture shown are for illustrative purposes only. The plans may change before construction is complete. The seller, its related companies and agents do not make any warranty as to the accuracy of these preliminary plans nor that they will not change. Buyers should note that the seller is permitted to make changes to the preliminary plans please refer to the contract of sale for full details.

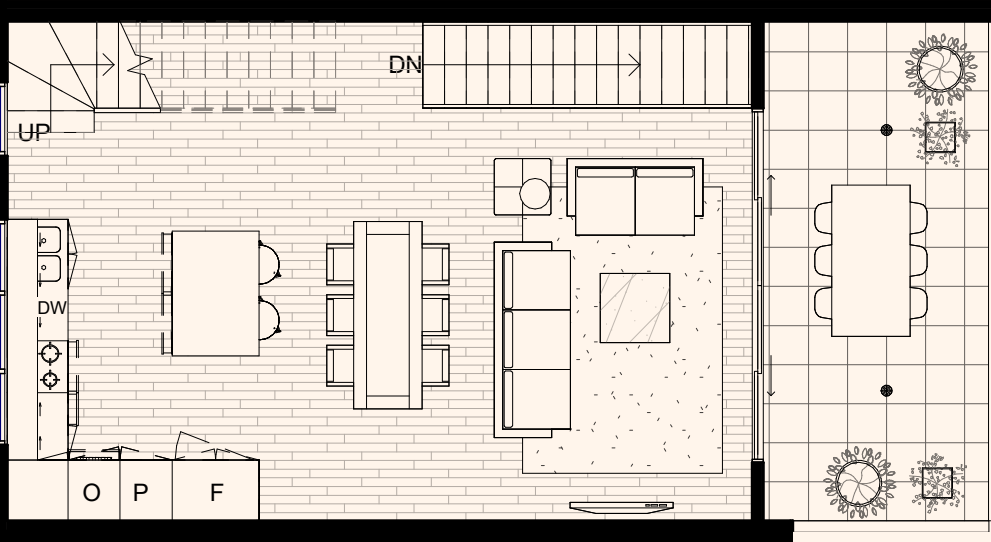
Five

INTERNAL	149 M <sup>2</sup>
GARAGE/CARPARK	44 M <sup>2</sup>
P.O.S.	38 M <sup>2</sup>
TOTAL	243 M <sup>2</sup>
LAND AREA	122 M <sup>2</sup>
BEDROOMS	3
BATHROOM	3
CAR SPACES	2

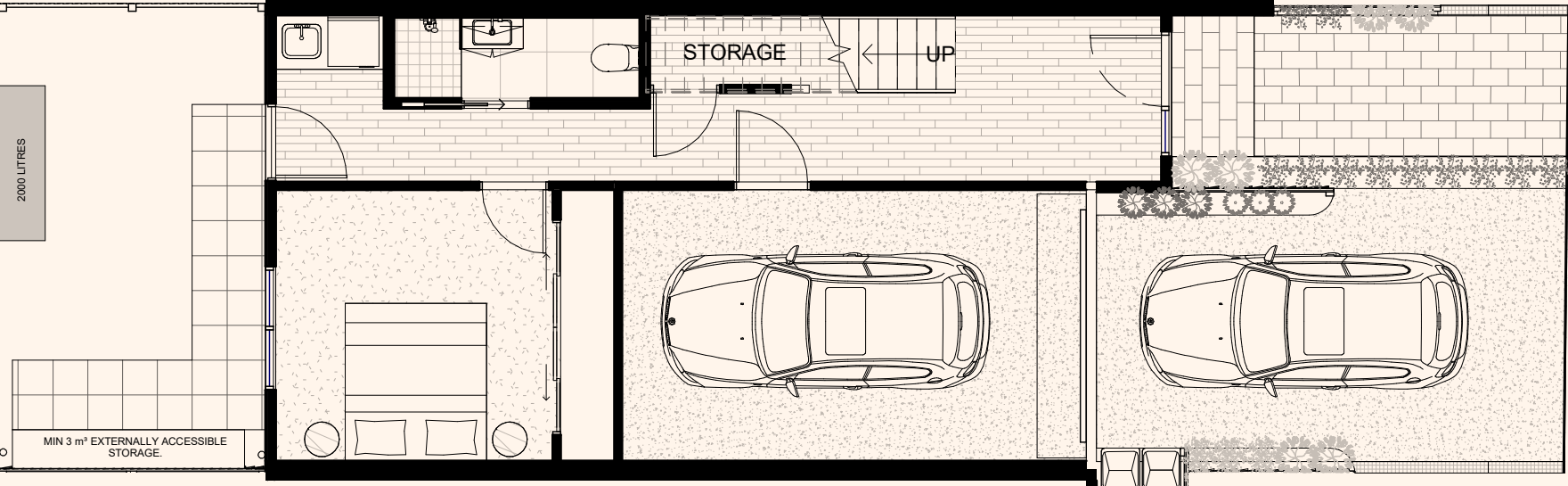
SECOND FLOOR



FIRST FLOOR



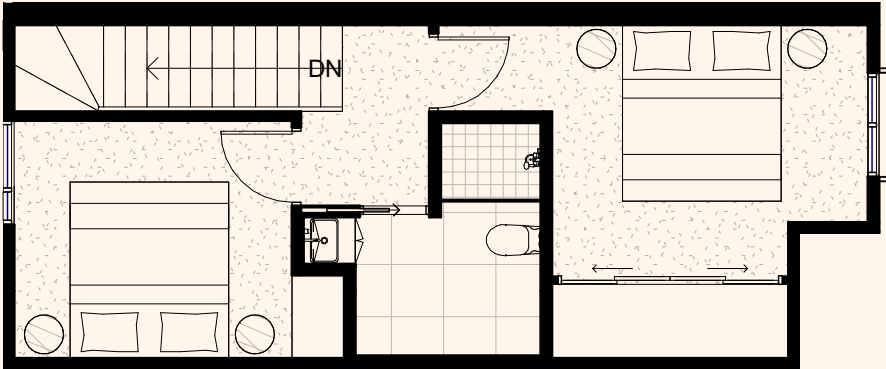
GROUND FLOOR



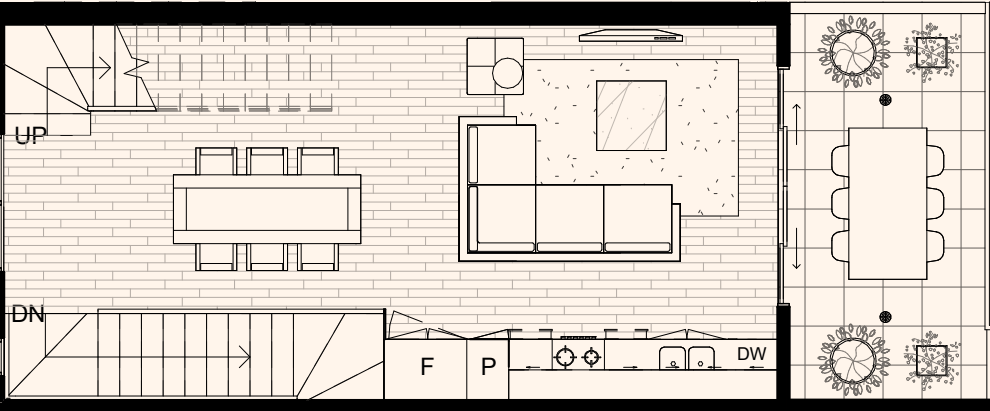
Six

INTERNAL	128 M <sup>2</sup>
GARAGE/CARPARK	45 M <sup>2</sup>
P.O.S.	23 M <sup>2</sup>
TOTAL	206 M <sup>2</sup>
LAND AREA	113 M <sup>2</sup>
BEDROOMS	3
BATHROOM	2
CAR SPACES	2

SECOND FLOOR



FIRST FLOOR



GROUND FLOOR

